

PROJECT HOPE

HORSE
WELFARE VICTORIA

2011 ANNUAL REPORT



PHHWV Mikki, a 2010 surrender

PHHWV Committee:

President:	Sue Kirkegard
Vice President:	Noelle Vine
Secretary:	Sharron Todd
Treasurer:	Chase Ellis
Ordinary Committee:	Jenni Austin Vici Burgess Carole Ainio Kirsty Jeffery

PHHWV Aims and Goals:

Throughout Victoria, whenever and wherever possible:

- to assist owners through education, assistance and advice to rehabilitate their own horses;
- to rescue and rehabilitate any horse found abandoned, sick, injured or mistreated;
- to provide emergency care, treatment and assistance to horses;
- to provide a suitable home for rehabilitated horses surrendered to The Association that, as far as possible, ensures their future well being
- to educate the community on the plight of neglected horses; and
- to contribute to the development of improved government legislation and policy relating to the welfare of horses.

Project Hope Horse Welfare Victoria Inc

GPO Box 1991, MELBOURNE 3001
1300 881 606

www.phhvw.org.au
info@phhvw.org.au

PHHWV is a registered non-profit organisation and is an endorsed charity by the Australian Taxation Office.

ABN: 96 820 500 367
Registration No: A0027152D

Contents:

Administration	p. 3
PHHWV Horses	p. 5
Community	p. 9
Treasurer's Report	p. 11
Income and Expense Report	p. 13

About:

Project Hope Horse Welfare Victoria Inc., originally known as Project Hope Horse Rescue first began in 1973 when a concerned Val Collingwood of Wallan, Victoria, wrote into RIDER magazine regarding the number of neglected horses in Australia.

She outlined a scheme whereby someone could co-ordinate the rescue and rehabilitation of these unfortunate animals and she suggested the name "Project Hope" in memory of a terribly neglected, supposedly aged, buck-jumper from Queensland. She had taken him home to try to save his life, giving him the name "Hope", although he had very little. He died three weeks later from massive worm infestation at the tender age of three.

People responded to Val's letter, assuming that she was to be co-coordinator and the scheme became loosely organised on a district basis.

Gradually, the organisation grew until it became necessary to use newsletters for communication, to introduce memberships fees to help cover costs, and to draw up a constitution. The group steadily grew from there and with the help of a logo and media coverage became a more familiar name in equine circles within Victoria. In 1993 the organisation became an incorporated and in 2005 was endorsed as a registered charity by Australian Taxation Office.

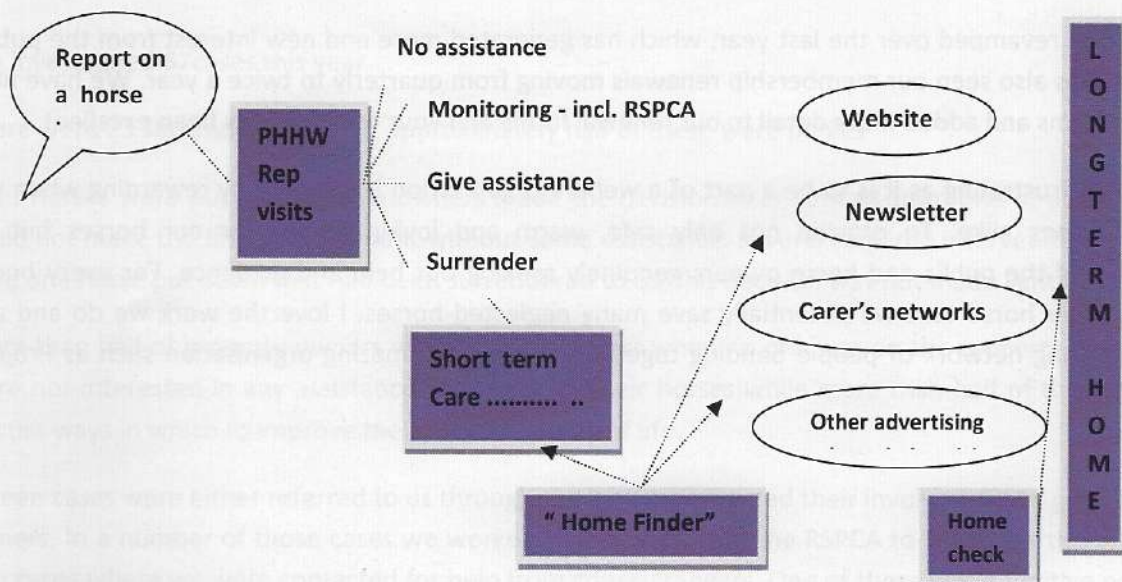
Presidents Report

The work of Project Hope in 2011 has again showed that the horse community in Victoria will help horses that are forgotten or not cared for. Member volunteers have responded to 67 horse reports, taken 23 horses into care, and placed 24 horses in long term homes.

The first contact is via the 1300 line or info@phhwv, and not all enquiries are for neglected horses. Owners may be unable to care for their horse and want to find a good home. These we refer to the website placement register. Some ask for advice on a horse concern in their own networks. In Jeparit, as well as elsewhere, we supported local people in action to assist horses in need.

Where a horse is surrendered, finding a home is a joint effort. Diagram 1 shows the call in, assigning a representative and then, when needed, arranging short term care. After this, each horse needs a home finder to get information about the horse to our website, the newsletter, and other places where a future carer may see it.

Diagram 1: Process from reporting to a long term home



Many help to find a horse a home. Someone handles enquiries in about horses available while others visit potential homes. There's the challenge to keep our datat up-to-date and to brief each new volunteer. Project Hope is only as strong as the skills and time that members can give.

For us, we value the small moments - when a horseman's skill helps a wild horse to be gentled, when a scared, unrideable horse has come to accept a new owner- rider, when a 'bag of bones' gets some condition and can graze quietly, when a trotter recovers from old wounds and moves without pain.

We appreciate the many donations, from members' selling raffle tickets, via bequests and direct giving, or through gratis professional support. Ninety-nine members volunteered time with administration, transport or directly with horses, and some large tasks such as merchandise sales, training, newsletter, and membership renewals were done 'off committee'.

In 2011 Project Hope worked with the Victorian Horse Council and the RSPCA matters including foaling and foster mares, and to disseminate information on equine-related risks and viruses. We sought members views on jumps racing, and have given this comment to government and equine groups. We found an unease that led some to demand a ban and others to argue for some deep and radical changes.

Traditionally Project Hope leases horses into long term homes. This year the committee and members looked in depth at this, with 96 horses now leased. A revision of lease arrangements is to be put to the 2012 Annual General Meeting.

Finally we give thanks for the work of committee members that coordinate this work. They manage funds, ensure each horse has the practical needs met, and that volunteers are asked to help. This coordinating work is often not 'with the horses' but behind the scenes. Thank you.

Sue Kirkegard

Secretary's Report

My first year as Project Hope Secretary has been interesting and challenging. The administration side of the organisation is ever increasing so, with new administrative and coordination roles being created, we hope to spread the work load a little more.

Our website has gradually been revamped over the last year, which has generated more and new interest from the public and members. This past year has also seen our membership renewals moving from quarterly to twice a year. We have also spruced up our membership forms and added more detail to our renewal forms and your feedback has been excellent.

As challenging and sometimes frustrating as it is to be a part of a welfare organisation it is definitely rewarding when we get to assist owners and horses alike. To provide not only safe, warm and loving homes for our horses but to successfully talk to members of the public and horse owners genuinely seeking our help and guidance. For every horse owner we can educate in proper horse care we potentially save many neglected horses. I love the work we do and am proud to be part of such a strong network of people banding together to form an amazing organisation such as Project Hope Horse Welfare Victoria.

Sharron Todd

Membership Report

Since November 2011, I have enjoyed the role of Membership Secretary and with that, comes meeting and learning from other members dedicated to the plight of equines in Victoria.

As there have been changes to the renewal process, namely reducing Annual Renewal Due Dates from four to two. The new Annual Renewal dates are September 1st, and April 1st. We have had 21 new members join us for the first quarter of 2012.

I am grateful and appreciate the support I have gained since taking up this role. I am in awe of the dedication of the members of this committee, and the outcomes they achieve are inspiring. Thank you PHHWV for not only inviting me to become a member, but for also allowing me the opportunity to contribute in various ways to this great cause.

Simone Wood

Newsletter

This year has seen the continued evolution of the newsletter to ensure its relevance to members and to ensure that the newsletter reflects the core work and values of PHHWV. A newsletter subcommittee was formed to consider how we may improve the quality, look, and feel of the newsletter, and it was resolved that in a time poor society we do not wish to overload our members by over communicating on issues that are not critical, and also, that we do not wish to create unwarranted expense to members in terms of printing a lengthy publication. Consequently, we have tried to reduce the number of pages of our newsletter this year to make reading our monthly communication a less onerous task for members. Further improvements are planned for the coming year including the use of a new newsletter template that will give our newsletter a new modern look and feel while retaining the quality of the newsletters content.

Kirsty Jeffery

PHHWV Horses

We investigated 67 cases this year.

There were 23 surrenders this year approximately half of these were ponies

Eight horses were put down. Some owners made the decision after contact from one of our representatives, several just could not make the final arrangement without some assistance. Several required intervention from RSPCA. We also had to have one horse put down that had been surrendered to us, this decision was not made lightly.

More than half of property owners who were left letters when no one was on the property contacted Project Hope. Some were not interested in any assistance with help for their horses while more than half of those responding were happy to discuss ways in which to improve their horse's quality of life.

Fifteen cases were either referred to us through the RSPCA or needed their involvement to get a satisfactory response from owners. In a number of those cases we worked side by side with the RSPCA to try to get the best outcome. We also had two cases where we were contacted for help from council rangers. One of these was a fugitive pony on a local reserve that avoided all attempts at capture.

There were six cases of multiple surrenders. Each of these was the result of owners breeding horses or ponies and then finding themselves in financial difficulties and unable to afford feed. One case involved feeding five horses on site for a number of weeks until they were strong enough to move on to short term care to continue their rehabilitation.

Seven cases needed urgent veterinary attention

A number of cases are unresolved due to the horses being removed from the property or owners refusing offers of assistance, but the horses were not in bad enough condition to involve the RSPCA. Wherever possible we try to monitor the condition of these horses. Often it is enough that the owners are aware that people are watching them to improve their horse care.

We had several reports from people who had seen photos of horses in some of the horse magazines, that they felt were not in a suitable condition for sale.

A lot of reports we get are resolved over the phone, some people just don't know where to go to get help and we can help by pointing them in the right direction or offering advice.

Noelle Vine

Horse Taken into Care in 2011

PHHWV Amelda



PHHWV Aurelia



PHHWV Bella



PHHWV Chance



PHHWV Destiny



PHHWV Daphney



PHHWV Fergie



PHHWV Grace



PHHWV Jean



PHHWV Myph



PHHWV Nel



PHHWV Opal



PHHWV Paris



PHHWV Peggy



PHHWV Rascal



PHHWV Shadow



PHHWV Sam



PHHWV Tangles



PHHWV Dijon



PHHWV Tiny



PHHWV Frodo



PHHWV Zephyrine



Long Term Leases

These horses in short term care found long term homes in this period: PHHWV Sam, PHHWV Tiny, PHHWV Katerina, PHHWV Makalali, PHHWV Sabo, PHHWV Shadow, PHHWV Sox, PHHWV Torry, PHHWV Wheetbix, PHHWV Daphney, PHHWV Chance, PHHWV Grace, PHHWV Jill and PHHWV Tia.

PHHWV Stormy, PHHWV Suede, PHHWV Georgia, PHHWV Roger, PHHWV Rafki, PHHWV Ella, PHHWV Jet, PHHWV Omni, PHHWV Penny, PHHWV Pirate, PHHWV Romeo and all went to new homes.

PHHWV Mayfield Rose Indigo and PHHWV Pepper came back into short term care.

Jenni Austin

In Memorium

Sadly 2011 saw us say goodbye to several Project Hope horses: PHHWVY Zephyrine, PHHWV Roxy, PHHWV Quigley, PHHWV Cleo and PHHWV Bandit.

Current Project Hope Horses

PHHWV Amber	PHHWV Damsel	PHHWV Jill	PHHWV Paris 2	PHHWV Sox
PHHWV Amelda	PHHWV Daphney	PHHWV Jim Boy	PHHWV Patches	PHHWV Spaggles
PHHWV Aurelia	PHHWV Decoda	PHHWV Jordan	PHHWV Peggy	PHHWV Star Jazmyn
PHHWV Autumn	PHHWV Destiny	PHHWV Kate	PHHWV Penny	PHHWV Stormy
PHHWV Bear	PHHWV Dillion	PHHWV Katerina	PHHWV Pepper	PHHWV Suede
PHHWV Beau	PHHWV Dynamite	PHHWV Lil	PHHWV Pirate	PHHWV Sultan
PHHWV Bella	PHHWV Eddy	PHHWV Lilly	PHHWV Pixie	PHHWV Sunny
PHHWV Ben	PHHWV Ella	PHHWV Makalali	PHHWV Pocket	PHHWV Tangles
PHHWV Birch	PHHWV Fergie	PHHWV Matthew	PHHWV Princess	PHHWV Texas
PHHWV Blaze II	PHHWV Gemma	PHHWV Mayfair Indigo	PHHWV Rafki	PHHWV Thomas
PHHWV Bobby	PHHWV Georgia	Rose	PHHWV Rascal	PHHWV Tia
PHHWV Boo	PHHWV Ginger I	PHHWV Meldam Streak	PHHWV Rasheem	PHHWV Dijon
PHHWV Brandy	PHHWV Ginger II	PHHWV Mikki	PHHWV Red	PHHWV Tilly
PHHWV Bubbles	PHHWV Gizmo	PHHWV Mini	PHHWV Red II	PHHWV Tinkerbell
PHHWV Buckley	PHHWV Grace	PHHWV Myph	PHHWV Roger	PHHWV Tiny
PHHWV Buster	PHHWV Grahame	PHHWV Nautilus	PHHWV Romeo	PHHWV Tomba
PHHWV Chance	PHHWV Hailey	PHHWV Nel	PHHWV Sabo	PHHWV Torry
PHHWV Charisma	PHHWV Honey II	PHHWV Nikita	PHHWV Sam	PHHWV Valentino
PHHWV Charlie Brown	PHHWV Jack	PHHWV Olive	PHHWV Scoobie	PHHWV Vault
PHHWV Chequers	PHHWV Jack II	PHHWV Omni	PHHWV Shadow	PHHWV Frodo
PHHWV Cindy	PHHWV Jane	PHHWV Oni	PHHWV Shakisma	PHHWV Wheetbix
PHHWV Clover	PHHWV Jay	PHHWV Opal	PHHWV Shebba	PHHWV Zelda
PHHWV Cookie	PHHWV Jean	PHHWV Ozzie	PHHWV Sherry	
PHHWV Creature Comfort	PHHWV Jet	PHHWV Paris	PHHWV Smokey	

Our community events continue to be very successful. These manage to assist us in raising much needed funds and also to get the message about equine welfare disseminated through the community. If an event is expected to raise in excess of \$5,000 or will involve gambling, it needs to be registered with the Victorian Commission on Gaming and Racing. If you are planning on holding a fundraising event please contact the committee to inform them. This way we can ensure that your event will be advertised in our newsletters and on the website and increase your publicity. It also ensures we can acknowledge your efforts! Information on fundraising for Project Hope is in our "Extra Little Bit of Hope" which can be downloaded from the website at: <http://www.phhvw.org.au/fund.html>

PHHVV Out and About!



Three members of the committee attended the **Flemington Community Race Day on Saturday 10th April 2011**. The aim of our involvement was an opportunity to inform racehorse owners of the fact that their animals will have a long life once they are finished with racing, and that the options available should be considered before the horse becomes at a risk of neglect. PHHVV Treasurer, Chase Ellis, was interviewed before the race and a 30 second film clip of PHHVV Lil was shown on the race day screen to urge owners to consider the post race life of their horses.

A colourful event held at **Mornington Pet Expo, Rosebud on Sunday November 27th 2011** was a great success. A huge thank you to Emma-Jayne Green and everyone else who helped out. The information stall was entirely manned by local members, and is a great example of our volunteer community pitching in to spread the Equine Welfare message.

Once again PHHVV attended **World Animal Day Event at Edgars Mission on Sunday October 2nd 2011** in Kilmore. This event focuses on encouraging people to be kind to, and consider the welfare of, animals. We were honoured to be invited to attend for the second year running.

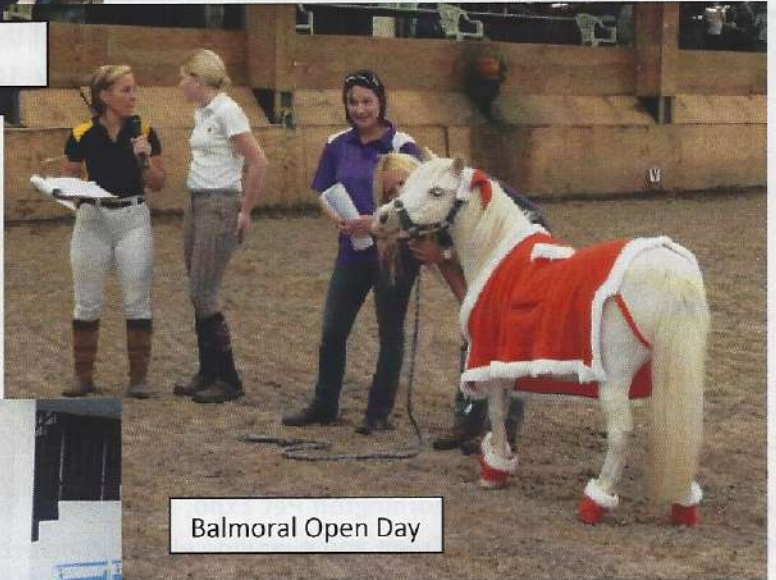
An enthusiastic member was able to pull strings and secure us a stall at the **Werribee Vet Clinic Open Day on 28th March 2011**. There were lots of "horsey" people present at this event and PHHVV Georgia attracted lots of attention and oodles of pats.

The **Paws in the Park Walk in Gisborne on Sunday October 3rd 2011** was a local event where Project Hope had information at a walk by stall.

Balmoral Equestrian Centre Open Day was held on the 19th December 2011 to end the year with a fantastic line up of free horse activities. Project Hope were invited to speak about the importance of horse care, nutrition and responsibilities of owning a horse. Ania, Anita and Heidi were given the opportunity to promote Project Hope to the large crowd. PHHVV Tinkerbelle assisted with donations and received many hugs and pats for her efforts. Heidi did a fantastic job of providing information to potential members and ensured "Tinky" was comfortable in her bright red Santa suit. Thanks to Heidi for her help through a long and successful day.



Werribee Vet Clinic Open Day



Balmoral Open Day

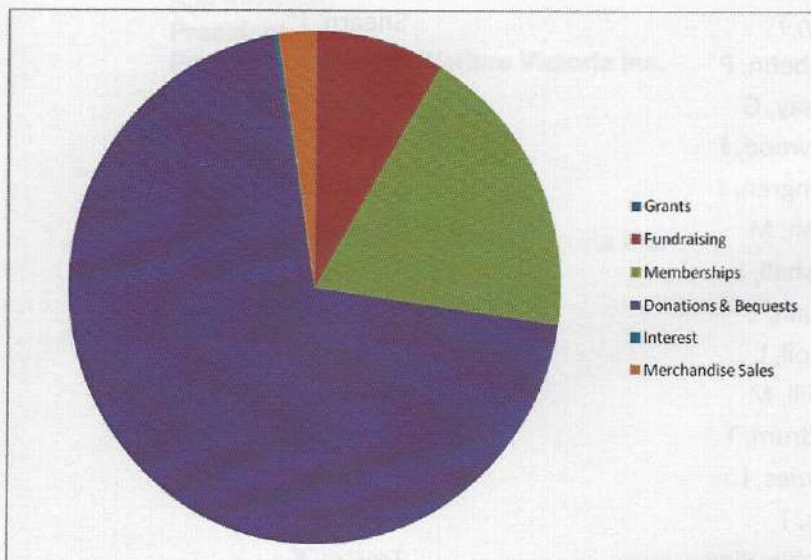
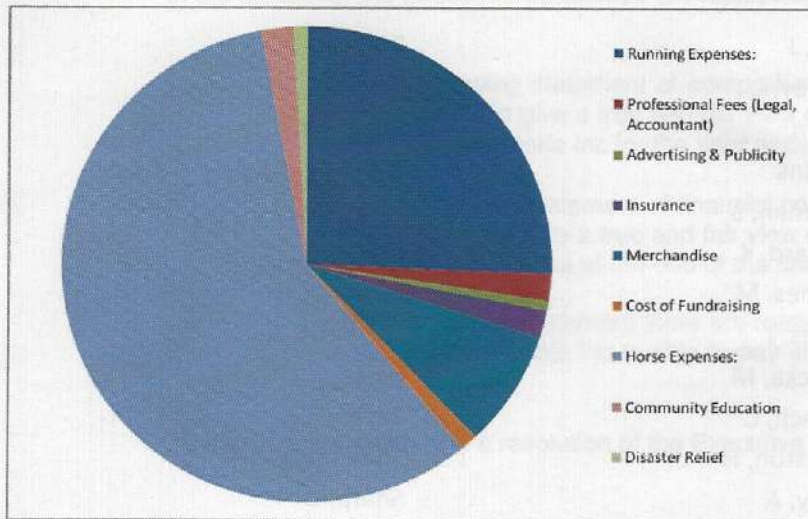


Flemington Community Race Day



Mornington Pet Expo

A breakdown of Income and Expenditure is given below. I am pleased to report that this year, over 50% of our expenditure went on directly assisting horses.



Thank you to everyone who has supported us through financial donations and membership fees, as well as those businesses and practitioners who donated, or significantly reduced the cost of, their goods and services. Also thanks to our short term carers, many of whom choose to fund all or part of the rehabilitation themselves.

In terms of review of the accounts, it was agreed at the AGM to again use the same auditors that reviewed the 2010 accounts. This enables them to confirm the starting figures and maintains consistency. Their report is attached to this document.

Chase Ellis

Financial Donors

Allen, L	Hart, J	Roberts
Austin, J	Harvey, L	Rossiter, L
Ayres, B	Hearn	Rozner, M
Bailey, O	Higgins	Ryan, C
Baird	Hoffman, S	Saunders, J
Barnard, R & J	Howard, K	Schaedler, Y
Bergin, J & P	Hughes, M	Schmidt, G
Best, V	James, J	Schween, A
Brehaut, L	Jedlicka, M	Scott, L
Brockwell, A	Jentsch, C	Secar
Brookes, S	Johnston, H	Shalders, B
Brown, B	Jolley, A	Sharp, B
Bucknell, J	Kerlin, K	Sharples
Cavagna, M	Kirby, T	Shearn, J
Cochrane, F	Langbehn, P	Sheehan
Coghlan, S	Lindsay, G	Skipworth, D
Collins, D	Lockwood, J	Smart, J
Coplan, J	Malmgren, J	Smith, L
Davies, D	Marsh, M	Staples, K
De Weerd, E	Marshall, L	Sturrock, J
Decker, T	McCain, L	Suzanne
Derix, S	McColl, L	Tanian
Dicker, C	McGill, M	Tarrant, M
Dickins, A	Meldrum, T	Taylor, M
Dorward, N	Menzies, L	Thomson
Downing, C	Mills, T	Todd, S
Duckworth, J	Minchin-King	Tresize, K
Eppingstall, R	Mira-Bateman, L	Truda
Estate of Joan Mary Barker	Mornington Peninsual	Tuohy, T
Fishbacher, H	Miniature Group	Turner, F
Flynn, K	Moroney, T	Up the Beaten Track
Fock, J	Nagel, J	Versteeg, C
Fraser	Nelles, Z	Warrender, A
Gallagher, W	Oxley, C	Watson, L
Gason	Palmer, M	Wheaton, M
Gawthrop	Perry, T	White, H
Gittens, A	Probst, J	White, J
Gorick, J	Pyke, J	Whiting, M
Greene	Pywell, M	Yendal
Guertin, A	Re, J	
Haffenden, S	Reynolds, R	
Hamilton, L	Ridd, H	
Harris	Riglar	

PROJECT HOPE HORSE WELFARE VICTORIA INC.**STATEMENT BY EXECUTIVE COMMITTEE**

In the opinion of the Executive Committee of Project Hope Horse Welfare Victoria Inc.:

- (a) the accompanying statement of comprehensive income and cash flow statement are drawn up so as to give a true and fair view of the result and cash flows of Project Hope Horse Welfare Victoria Inc for the year ended 28 February 2012;
- (b) the accompanying statement of financial position and statement of changes in equity is drawn up so as to give a true and fair view of the state of affairs of Project Hope Horse Welfare Victoria Inc. as at the end of the financial year; and
- (c) at the date of this statement there are reasonable grounds to believe that Project Hope Horse Welfare Victoria Inc is able to pay its debts as and when they become due and payable.

Signed in accordance with a resolution of the Executive Committee.

Sue Kirkegard
President
Project Hope Horse Welfare Victoria Inc.



.....

Chase Ellis
Treasurer
Project Hope Horse Welfare Victoria Inc.



.....

Dated this ^{9th} day of June 2012

PROJECT HOPE HORSE WELFARE VICTORIA INC.
FINANCIAL REPORT
FOR THE YEAR ENDED 28 FEBRUARY 2012

Page Number

2
3
5
6
7
8
9 - 13

Statement by Executive Committee

Auditors' report

Statement of Comprehensive Income

Statement of Financial Position

Statement of Cash Flows

Statement of Changes in Equity

Notes to the financial statements

***Project Hope Horse
Welfare Victoria Inc.***

*Financial Report for the year ended
28 February 2012*

**PROJECT HOPE HORSE WELFARE VICTORIA INC.
STATEMENT BY EXECUTIVE COMMITTEE**

In the opinion of the Executive Committee of Project Hope Horse Welfare Victoria Inc.:

- (a) the accompanying statement of comprehensive income and cash flow statement are drawn up so as to give a true and fair view of the result and cash flows of Project Hope Horse Welfare Victoria Inc for the year ended 28 February 2012;
- (b) the accompanying statement of financial position and statement of changes in equity is drawn up so as to give a true and fair view of the state of affairs of Project Hope Horse Welfare Victoria Inc. as at the end of the financial year; and
- (c) at the date of this statement there are reasonable grounds to believe that Project Hope Horse Welfare Victoria Inc is able to pay its debts as and when they become due and payable.

Signed in accordance with a resolution of the Executive Committee.

Sue Kirkegard
President
Project Hope Horse Welfare Victoria Inc.

Chase Ellis
Treasurer
Project Hope Horse Welfare Victoria Inc.

Dated this day of June 2012

**INDEPENDENT AUDIT REPORT
TO THE MEMBERS OF
PROJECT HOPE HORSE WELFARE VICTORIA INC.**

We have audited the accompanying financial report, being a special purpose financial report, of Project Hope Horse Welfare Victoria Inc., which comprises the statement of financial position as at 28 February 2012, and the statement of comprehensive income, statement of changes in equity and statement of cash flows for the year then ended, a summary of significant accounting policies and other explanatory notes.

The Responsibility of the Committee for the Financial Report

The Committee members are responsible for the preparation and fair presentation of the financial report in accordance with Australian Accounting Standards (including the Australian Accounting Interpretations). This responsibility includes establishing and maintaining internal controls relevant to the preparation and fair presentation of the financial report that is free from material misstatement, whether due to fraud or error; selecting and applying appropriate accounting policies; and making accounting estimates that are reasonable in the circumstances.

Auditor's Responsibility

Our responsibility is to express an opinion on the financial report based on our audit. We conducted our audit in accordance with Australian Auditing Standards. These Auditing Standards require that we comply with relevant ethical requirements relating to audit engagements and plan and perform the audit to obtain reasonable assurance whether the financial report is free from material misstatement.

An audit involves performing procedures to obtain audit evidence about the amounts and disclosures in the financial report. The procedures selected depend on the auditor's judgment, including the assessment of the risks of material misstatement of the financial report, whether due to fraud or error. In making those risk assessments, the auditor considers internal control relevant to the entity's preparation and fair presentation of the financial report in order to design audit procedures that are appropriate in the circumstances, but not for the purpose of expressing an opinion on the effectiveness of the entity's internal control. An audit also includes evaluating the appropriateness of accounting policies used and the reasonableness of accounting estimates made by the Directors, as well as evaluating the overall presentation of the financial report.

We believe that the audit evidence we have obtained is sufficient and appropriate to provide a basis for our audit opinion.

PROJECT HOPE HORSE WELFARE VICTORIA INC
STATEMENT OF COMPREHENSIVE INCOME
FOR THE YEAR ENDED 28 FEBRUARY 2012

	NOTE	2012	2011
		\$	\$
Revenues from ordinary activities			
Fundraising		6,562	8,581
Memberships		14,775	19,860
Donations & Bequests		54,546	26,733
Interest		3,221	387
Other Income		1,916	2,232
		<u>81,020</u>	<u>57,793</u>
Total Revenue from Ordinary Activities			
Expenses from ordinary activities			
Bank Charges		1,196	1,392
Postage		4,488	3,093
Office Expenses		2,656	3,024
Storage Unit		2,490	2,275
Professional Fees (Legal, Accountant)		9,020	16,633
Administration Fees		-	5,808
Phone/Internet		2,980	3,651
Printing		2,189	378
Advertising & Publicity		458	689
Insurance		1,336	1,314
Cost of Sales		875	140
Cost of Fundraising		831	-
Venue Hire & Catering		1,506	1,098
Miscellaneous		879	625
Depreciation		1,130	1,480
Horse Training		15,051	758
Vet		11,363	4,145
Dentist		962	592
Farrier		2,528	269
Euthanasia		-	891
Feed		5,590	4,043
Agistment		200	-
Travel & Transport		3,140	1,014
General Horse Expenses		1,099	320
Community Education		1,540	1,609
Disaster Relief		169	4,655
Sundry Expenses		-	455
		<u>73,566</u>	<u>60,363</u>
		<u>7,454</u>	<u>(2,570)</u>
		<u>7,454</u>	<u>(2,570)</u>

INDEPENDENT AUDIT REPORT

TO THE MEMBERS OF

PROJECT HOPE HORSE WELFARE VICTORIA INC. (CONTINUED)

Qualifications

In common with other entities of its size and nature, the Association receives a substantial proportion of revenue from donations in the form of cash. Project Hope Horse Welfare Victoria Inc. has determined that it is impractical to establish controls over the collection of cash revenue prior to its entry into its financial records. Accordingly, as the evidence available to us regarding cash revenue was limited, our audit procedures with respect to cash revenue had to be restricted to the amounts recorded in the financial records. We therefore are unable to express an opinion whether revenue from fundraising and donations by the Association is complete.

Qualified Audit Opinion

In our opinion, except for the effects on the financial report of such adjustments, if any, as might have been required had the limitations on our audit procedures referred to in the qualification paragraphs not existed, the financial report presents fairly, in all material respects, the financial position of Project Hope Horse Welfare Victoria Inc. as of 28 February 2012 and of its financial performance and its cash flows for the year then ended in accordance with the accounting policies described in Note 1 to the financial statements.

Basis of Accounting and Restriction on Distribution and Use

Without modifying our opinion, we draw attention to Note 1 to the financial report, which describes the basis of accounting. The financial report is prepared to assist Project Hope Horse Welfare Victoria Inc to comply with the accounting policies described in Note 1 to the financial statements and the *Associations Incorporations Act 1981 (Vic)*. As a result, the financial report may not be suitable for another purpose.

DFK Collins
Chartered Accountants

June 2012

Robert Wernli
Partner

Meibourne

Net result attributable to members of the Association

PROJECT HOPE HORSE WELFARE VICTORIA INC.
STATEMENT OF CHANGES IN EQUITY
FOR THE YEAR 28 FEBRUARY 2012

	RETAINED EARNINGS	TOTAL
AT 1 MARCH 2011	99,150	99,150
Comprehensive result for the period	7,454	7,454
AT 28 FEBRUARY 2012	106,604	106,604
AT 1 MARCH 2010	101,720	101,720
Comprehensive result for the period	(2,570)	(2,570)
AT 28 FEBRUARY 2011	99,150	99,150

PROJECT HOPE HORSE WELFARE VICTORIA INC.
NOTES TO THE FINANCIAL STATEMENTS
FOR THE YEAR ENDED 28 FEBRUARY 2012

1. STATEMENT OF SIGNIFICANT ACCOUNTING POLICIES

(a) Basis of accounting and preparation

The Association is incorporated under the Associations Incorporation Act 1981. The Association is not a reporting entity because, in the Committee's opinion, it is unlikely that users exist who are unable to command the preparation of reports tailored so as to satisfy, specifically, all of their information needs.

This is a special purpose financial report that has been prepared for distribution to members of the Association for the purpose of fulfilling the committee members' financial reporting requirements under its Constitution. The Committee has determined that the accounting policies adopted are appropriate to meet the needs of the members.

The report has been prepared in accordance with the requirements of the Associations Incorporation Act 1981, and the following applicable Australian Accounting Standards and Interpretations:

AASB 101	Presentation of Financial Statements	AASB 116	Property, Plant and Equipment
AASB 107	Cash Flow Statements	AASB 117	Leases
AASB 110	Events after Balance Sheet Date	AASB 1031	Materiality
		AASB 1048	Interpretation and Application of Standards

The financial report is prepared in accordance with the historical cost convention.

Unless otherwise stated, all accounting policies applied are consistent with those of the prior year. Where appropriate, comparative figures have been amended to accord with current presentation and disclosure made of material changes to comparatives.

(b) Basis of measurement

The financial report has been prepared on an accruals basis and is based on historic costs and does not take into account changing money values, or except where specifically stated, current valuations of non-current assets

(c) Revenue

Donations & Grants

Donations and Grants are recognised at the time when the Association obtains control over the assets, this usually occurs upon receipt of the funds.

(d) Cash and cash equivalents

Cash and cash equivalents in the balance sheet comprise cash at call in bank accounts and cash on hand. These amounts are carried at the face value of the amounts deposited and approximate net fair value.

PROJECT HOPE HORSE WELFARE VICTORIA INC.

NOTES TO THE FINANCIAL STATEMENTS

FOR THE YEAR ENDED 28 FEBRUARY 2012

1. STATEMENT OF SIGNIFICANT ACCOUNTING POLICIES (CONTINUED)

(e) Property, plant and equipment

Acquisitions
Items of property, plant and equipment are initially recorded at cost and depreciated as outlined below.

Depreciation
Items of property, plant and equipment are depreciated over their estimated useful lives.

The depreciation rates used for each class of asset are as follows:

- Office equipment 20% - 30%
- Furniture & Fittings 10% - 25%

(f) Income tax

In the opinion of the Committee, the Association is exempt from income tax under Section 50-45 of the Income Tax Assessment Act.

(g) Trade and Other payables

Liabilities are recognised for amounts to be paid in the future for goods or services received, whether or not billed to the Association. Trade accounts payable are normally settled within 30 days. The carrying value of payables approximates net fair value.

(h) Horses

The association owns a number of horses that are acquired and recorded at zero cost. The horses do not meet the definition of an asset as it is not probable that any future economic benefits embodied in the horses will eventuate. It is the policy of the Association not to sell any of the horses and in the event of the Association ceasing, the horses will be gifted to another organisation for no consideration.

As at 28 February 2012 the Association had recorded 101 horses on its horse database. These horses are maintained by members under long term lease agreements with the Association.

Expenditure incurred on maintaining and keeping the horses in short term care are expensed as incurred.

PROJECT HOPE HORSE WELFARE VICTORIA INC.

NOTES TO THE FINANCIAL STATEMENTS

FOR THE YEAR ENDED 28 FEBRUARY 2012

2. NET INCOME	2012	2011
	\$	\$
Net income has been arrived at after charging / (crediting) the following items:		
Depreciation of plant and equipment	1,130	1,480
3. CASH AND CASH EQUIVALENTS		
Cheque Account - Westpac	18,106	31,438
Gift Account - Westpac	11,265	18,610
Grant Account - Westpac	6,148	21,278
Appeals Account - Westpac	76	75
Term Deposit	63,023	20,000
	98,618	91,401
4. INVENTORY		
Merchandise	17,386	12,664

PROJECT HOPE HORSE WELFARE VICTORIA INC.
 NOTES TO THE FINANCIAL STATEMENTS
 FOR THE YEAR ENDED 28 FEBRUARY 2012

	2012	2011
	\$	\$
5. PROPERTY, PLANT & EQUIPMENT		
(i) Book value disclosure		
Equipment at cost	6,749	6,749
Less accumulated depreciation	<u>(5,094)</u>	<u>(3,984)</u>
Total property, plant & equipment		
Net book value	<u>1,655</u>	<u>2,765</u>
Opening WDV at beginning of year	2,785	3,921
Additions	-	344
Depreciation expense	<u>(1,130)</u>	<u>(1,480)</u>
Balance at year end	<u>1,655</u>	<u>2,765</u>
6. TRADE AND OTHER PAYABLES		
Creditors & Accruals	<u>11,055</u>	<u>7,700</u>
	<u>11,055</u>	<u>7,700</u>
7. RETAINED EARNINGS		
Retained surplus at the beginning of the financial year	99,150	101,720
Net (deficit)/surplus	<u>7,454</u>	<u>(2,570)</u>
Retained surplus at the end of the financial year	<u>106,604</u>	<u>99,150</u>

PROJECT HOPE HORSE WELFARE VICTORIA INC.
 NOTES TO THE FINANCIAL STATEMENTS
 FOR THE YEAR ENDED 28 FEBRUARY 2012

	2012	2011
	\$	\$
8. NOTES TO THE CASH FLOW STATEMENT		
(i) Reconciliation of cash		
For the purposes of the cash flow statement, cash includes cash on hand and short term deposits with banks or financial institutions.		
Cash at the end of the financial year as shown in the cash flow statement is reconciled to the related items in the balance sheet as follows:		
Cash at bank & short term deposits	98,618	91,401
	<u>98,618</u>	<u>91,401</u>
(ii) Reconciliation of operating surplus to net cash provided used in operating activities		
Operating (deficit)/ surplus after income tax	7,454	(2,570)
Add/(less) non-cash items:		
Depreciation	1,130	1,480
Net cash provided (used) in operating activities before change in assets and liabilities	8,584	(1,090)
Changes in assets and liabilities:		
(Decrease)/ increase in payables	3,355	(20,300)
Decrease/(increase) in inventory	<u>(4,722)</u>	<u>1,023</u>
Net cash provided by / (used in) operating activities	<u>7,217</u>	<u>(20,367)</u>

PHHWV Fergie

Rehabilitation of a Horse

July 2011- First contact



4 weeks later



Getting Better!!!!



September 2011



March 2012

