

PROJECT HOPE

HORSE

WELFARE VICTORIA

2012

annual report

Project Hope Horse Welfare Victoria Inc (PHHW) is a non-profit organisation committed to providing hope for Victorian equines through education, rehabilitation and advocacy



Cover model: PHHW Peggy. Rescued June 2009

www.phhwv.org.au

PHHWV Annual Report 2012

Who are Project Hope Horse Welfare Victoria?

Project Hope Horse Welfare Victoria Inc (PHHWV) is a non-profit organisation committed to providing hope for Victorian equines through education, rehabilitation and advocacy.

PHHWV Inc. is a registered incorporated non-profit organisation. It is governed by a committee of management as per the Associations Incorporations Reform Act 2012 (Vic).

The Australian Taxation Office has registered PHHWV as a Charitable Institution that is Income Tax Exempt in addition to having Deductible Gift Recipient Status which means all donations over \$2 are tax deductible.

PHHWV is run by volunteers and is self funded through memberships, donations and fundraising activities.

PHHWV Mission & Goals

Throughout Victoria, whenever and wherever possible:

- To assist owners through education, assistance and advice to rehabilitate their own horses
- To provide emergency care, treatment and assistance to horses
- To rescue and rehabilitate any horse found abandoned, sick, injured or mistreated
- To find a suitable home for rehabilitated horses surrendered to PHHWV that, as far as possible, assures the horses' future well-being
- To educate the community on the plight of neglected horses
- To contribute to the development of improved government legislation and policy

Origins of Project Hope

PHHWV Inc., originally known as Project Hope Horse Rescue first began in 1973 when a concerned Val Collingwood of Wallan, Victoria, wrote into RIDER magazine regarding the number of neglected horses in Australia.

She outlined a scheme whereby someone could co-ordinate the rescue and rehabilitation of these unfortunate animals and she suggested the name "Project Hope" in memory of a terribly neglected, supposedly aged, buck-jumper from Queensland. She had taken him home to try to save his life, giving him the name "Hope", although he had very little. He died three weeks later from massive worm infestation at the tender age of three.

People responded to Val's letter, assuming that she was to be co-coordinator and the scheme became loosely organised on a district basis.

Gradually, the organisation grew until it became necessary to use newsletters for communication, to introduce memberships fees to help cover costs, and to draw up a constitution. The group steadily grew from there and with the help of a logo and media coverage became a more familiar name in equine circles within Victoria.

**PHHWV 2012 Annual Report designed pro-bono by PHHWV member Mandy Macartney. Visit www.mandymacartney.weebly.com for more info.*

Contents

- Presidents Report3
- Administration4
- PHHWV Horses6
- Progress Report 10
- Community 12
- Treasurer's Report... 16
- Income & Expenses ..17

Committee

President

Sue Kirkegard

Vice President

Noelle Vine

Secretary

Sharron Todd

(leave June-Dec '12)

A/Secretary

Gabrielle de Weerde

(to Feb '13)

Treasurer

Mark Dean

Ordinary Committee

Chase Ellis

Jenni Austin

Gabrielle de Weerde

Minda Blake

Sandra Kasunic

Contact Us

Project Hope Horse
Welfare Victoria Inc.

GPO Box 1991

MELBOURNE 3001

PH: 1300 881 606

Registration number:

A0027152D

ABN: 96 820 500 367

Email: info@phhvw.org.au

www.phhvw.org.au

presidents report

As President, I hear many of the anecdotes. In the visits of reps to neglected horses, in short term care, or in assessing people wanting horses, the President and members of the Executive hear a range of heartening and sobering stories. This year shows our growth and shows Project Hope Horse Welfare has been called on to help:

- *A gentleman in his 80's rang quite distressed. He had cared for a horse left by a friend for 20 years, but now could not get the rug back after taking it off to get a tear mended. The elderly horse would come for feed but he could not catch it, and heavy rain was coming. A nearby PH rep rang him. She was able to talk him through steps to create a small temporary yard and catch the horse. The rug was put on safely.*
- *A young mother rang to surrender 2 young out of control ponies. She had hoped to educate them for her young children, but was relying on internet advice without previous knowledge. She was worried about the horses being dangerous. A PH member experienced with ponies visited and found the ponies stropky but controllable. They were found suitable homes with adequate knowhow.*
- *This year we have also had the joy of seeing three foals, all rescued in the well publicised Kyneton horse rescue (2007), become riding horses. Both PHHWV Spaggles and PHHWV Mayfield Indigo Rose, are making their way in the competition circuit. PHHWV Rafki is well settled in a country home, gaining experience in group trail rides and local competitions. Not often do we see the long view over the years.*

I wish to thank all members that have done 'something extra'. We also thank educators of horses who have given probono help to create special futures for PH horses and equine professionals to assist on their own time. To all of these, we sayTHANK YOU.

Project Hope stalls, telling our story, also happened regularly in 2012. Whenever and wherever possible, PH members are leading discussion about the needs and care of horses. We addressed students in the Animal Welfare course at Box Hill TAFE. Late 2012 we gained a small DPI grant to tell the stories of our representatives, on how to talk with owners about their horses.

PHHW committee members each manage an area of Project Hope work, so their spare time has a large chunk taken out of it either in supporting PH reps doing horse reports, matching needs to members' offers of help, doing finance & membership, admin tasks and the info line, media and events, or finding short term care. We thank their families for this time given, and each for their leadership.

As a committee we value each and every PH member, and your generosity in helping. This combined effort can and will continue to improve the wellbeing of horses in Victoria.

Sue Kirkegard

PHHWV HIGHLIGHTS 2012:

First PHHWV Member's Day

Professional educators help PHHW horses

Steady growth in calls and PH reps trained

PHHW on show at Equitana

'Oldies' found homes

PHHWV and TREW jointly help in disasters

disaster relief

By Sue Kirkegard

PHHWV and Triple R Equine Welfare pooled resources to help horses caught in natural disasters in Victorian autumn floods and last summers' fires. We delivered donated fodder and medical supplies, and gave immediate financial help by an arrangement with local produce stores.

Help was taken and sent to individual owners in Chepstow, Horsham and Heyfield in Victoria. By arrangement with local horse clubs, we also helped out at Heyfield, went up to Coonabarabran in Northern New South Wales, and sent financial help to local clubs for distribution after the Tasmanian fires. *Picture Right:* Ponies that were helped through PHHWV disaster relief efforts in Coonabarabran, in northern New South Wales.



secretary's report

This reporting period has seen three changes in the person who fills the role of the Secretary. We started off the year with Sharron Todd continuing from the last reporting period in the position as Secretary. Early on, Sharron and her family took the plunge and embarked on a trip around Australia. While Sharron was away, Gabby Saunders generously volunteered to cover the day to day functions.

In addition, I volunteered to cover the administration of the horse lease records. Half way through the reporting year, Sharron and her family decided that they were having an absolutely fabulous time so wished to continue their journey. Shortly thereafter, Sharron resigned from the position of Secretary due to the unclear time frame of when she would be back. Unfortunately, the fabulous work that Gabby was doing had to stop when circumstances compelled her to also resign from the position of Secretary. Consequently, I stepped in to carry out the role of the Secretary and have been performing those duties ever since.

From the first day, the learning curve has been huge. Keeping an organisation like Project Hope working requires significant effort. It would not be possible without all the time invested by members, and the committee members, to be able to achieve our vision and goals.

During the 2012/2013 year, few significant changes or improvements were made (due to the need to simply carry out the minimum duties). Details of the leases of Project Hope horses had been collated and updated for nearly every horse. We were very close (and still are close) to holding copies of leases for all Project Hope horses that are with their current carer. Knowing which horse is with which member is critical information.

Further improvements are being made to our electronic records and documents. The transition of our accounting software to the new Reckon system is anticipated to provide significant benefits in the membership data required to be kept by the Secretary. Of course, none of this could happen without the contributions by others. So I would like to thank all members who have given so much of their time and energy in making Project Hope not just work, but get better all the time. In these ways, the horses will benefit as the people involved with each horse will have clearer, and more readily available, information to use.

Any and all assistance, as well as ideas, is welcome to make this organisation the best it can be.

Sandra Kasunic

members at work

Neglect/Abuse: For each report of a neglected horse, a trained PH member went out to talk to the owner.

Floating Horses: 27 members did nearly 50 trips floating horses from A to B.

Short Term Care: 37 members cared for a horse short term... anytime from a few weeks to more than six months.

Home Check: 21 potential long term homes were visited.

Events: 40 members helped. 31 members helped PHHWV presence at Equitana. 14 local members made themselves available for PH at Nilimbik, Kyneton and Gisborne.

Admin: 6 members managed big tasks

- Lucy delivered representative training
- Sharon managed merchandise orders
- Simone sent out membership renewals
- Margaret packaged PHHWV information for stalls
- Kristin, Hinalei and Tracey produced the monthly newsletter
- Dianne checked the experience of members offering transport

All members have the opportunity when renewing their membership of Project Hope, to tick the areas they might have time to help with in the coming year.



membership report

By Simone Wood - Membership Administrator

Membership renewal falls due once per year on one of two dates, either 1 March and 1 September.

We have 419 members currently.

We have had 38 new members this year, and 23 members have been removed from the membership list.

Member's Initiative

A flyer was sent around the local pony clubs in a Victorian country town. PHHWV Ticketty Boo found a long term home in 2012, see page 9 for pictures. Thank you to our caring members.

AUSTRALIAN PONY GELDING BY TAPU FIG JAM FOR FREE LONG-TERM LEASE (To Project Hope approved home only)

PHHW TICKETTY BOO has been in the care of Project Hope since he was surrendered by his former owners. He has recently been broken in by well known natural horseman Jason McInnes and is ready to go on with. He stands around 12hh and is 6 years old. Boo is a real little sweetie and has absolutely no vices. He catches, leads, ties up, floats, and trims with no fuss at all. He's very curious and loves going out to new places



However, due to his past mistreatment he has trust issues where humans are concerned. He is very quick and reactive and because of this would only suit a confident rider. He would make an ideal games mount being very fast and sure footed. Once he has trust in his handler he has an enormous capacity to learn and improve. All he needs now is the right long-term partner.



Boo's sire:
Tapu Jig Jam

**If you think you may be that partner
you can contact Jennifer Burchat on**

**or Sue Kirkegard at Project Hope
info@phhwv.org.au**

PHHWV horse reports

We investigated 70 cases this year. Sixteen horses were surrendered.

12 cases reported to us were referred to the RSPCA for action, one pony was euthanised immediately whilst in surgery. Six owners were supported to euthanise their horse due to either age or veterinary advice.

We have Representatives continually monitoring 15 reported cases and providing advice to the owners on appropriate horse care.

Of the remaining 25 reported cases, PH were unable to resolve a number of them as owners refused offers of assistance, or the horse had been moved. However the majority of the remainder required no further action after being assessed by our representatives.

70 cases reported,
in total 125 horses
6 owners supported
to euthanase their
horse
12 cases reported
to RSPCA
15 representatives
continuing to
monitor a horse
25 cases, no further
action possible



Picture Above: Bart - July 2012



Picture Above: Bart - October 2012



Picture Above: Zac is one of seven small ponies surrendered to Project Hope over Spring 2012.



Picture Above: Honey. Worked with RSPCA to monitor.

short term care

Thirty seven people provided short term care, sometimes for more than one horse.

Several older horses were in very poor condition, either being abandoned or their owners unable to care for them.

Seven unhandled ponies were taken in, in 3 lots, mostly young, several running wild for years. One couple took 1.5 hours for two experienced people to load on a stock crate! All of these were trained by PH short term care members and are now led, riding or companion ponies.

Several horses were educated in 2011 and due to the special needs of each, it took until 2012 to find the right home for them.

Four horses were extremely malnourished when they arrived.

IN MEMORIAM

Sadly the following horses have passed away:

PHHWV Nel

PHHWV Sparky

PHHWV Jane



PHHWV Bella after having her feet trimmed in 2012.



PHHWV Carlo at bathtime.



PHHWV George at dinner time.



Bunny now starting to learn to trust people, with carer Dianne Luc (and Teabag the cat!)



horses taken into care 2012



PHHWV Bart



PHHWV Bella



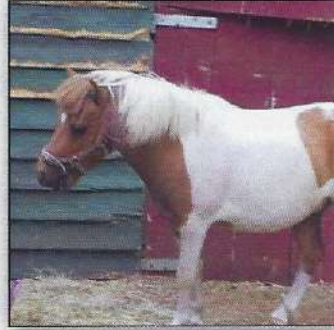
PHHWV Ted



PHHWV Yogi Bear



PHHWV Peggy



PHHWV Jellybean



PHHWV Patience



PHHWV Zac



PHHWV Arizona



PHHWV Carlo



PHHWV Cassie



PHHWV George



PHHWV Bunny



PHHWV Ned



PHHWV Rosie



PHHWV Popcorn

horses recently homed

21 horses started new leases in long term care in 2012.



PHHWV Frodo



PHHWV Fergie



PHHWV Roger with his reserve
champion ribbon



PHHWV Auriella



PHHWV Peg



PHHWV Tickety Boo at pony club



PHHWV Destiny



PHHWV Jellybean

Look at them

now

Progress Report
of a very special
horse, Miss Mayfield
Indigo Rose, nick
named here at
Team Joan Michael
Equestrian Centre
(T.J.M) as 'Wozy
two shoes'.



"PHHWW Mayfield Indigo Rose, PHHWW Spaggles and PHHWW Rafki in 2007 were foals rescued from a site of death and dying, which was successfully pursued by a RSPCA prosecution of an owner at Kyneton. After initial rehab, they all went to rural homes 'to grow up'. Four years on, this is a report of one of these little foals, PHHWW Mayfield Indigo Rose. Picture Above: Rose and Spaggles

Lovely Rose arrived here at Team Joan Michael Equestrian Centre on September 10th 2012. Rose was adopted by the owners of T.J.M with the future goal for Rose to become Michele O'Rileys two year old grand-daughters dressage pony. Michele's grand-daughter, Shytaya currently rides a very much loved Shetland pony who has happened to be part of the family at T.J.M for the last thirteen years. Twinky has taught both Micheles older grandchildren to ride and has attended many years of Pony Club Rallies .

On Roses safe arrival to T.J.M she floated calmly from her previous property owned by Renee, to T.J.M and settled into her new surroundings very easily while Renee and new owners, Michele and Angel O'Riley shared a cuppa and

watched as she exploded in her new paddock. There were some tears as Renee left and said goodbye to Rose. It was obvious that Rose holds a special place in Renee's heart. Renee was part of the team who saved her from the paddock some years ago as a foal from the case known as the Kyneton Case.

Rose spent her first day here relaxing and settled in and by day two was straight into work, where she headed out into the bush tracks to become established with her new rider.

Rose was well mannered and calm, but it was obvious to us that Rose had some large issues with acceptance of the bit; even with the lightest contact she was scared. We continued on with bush work and lunging her for a

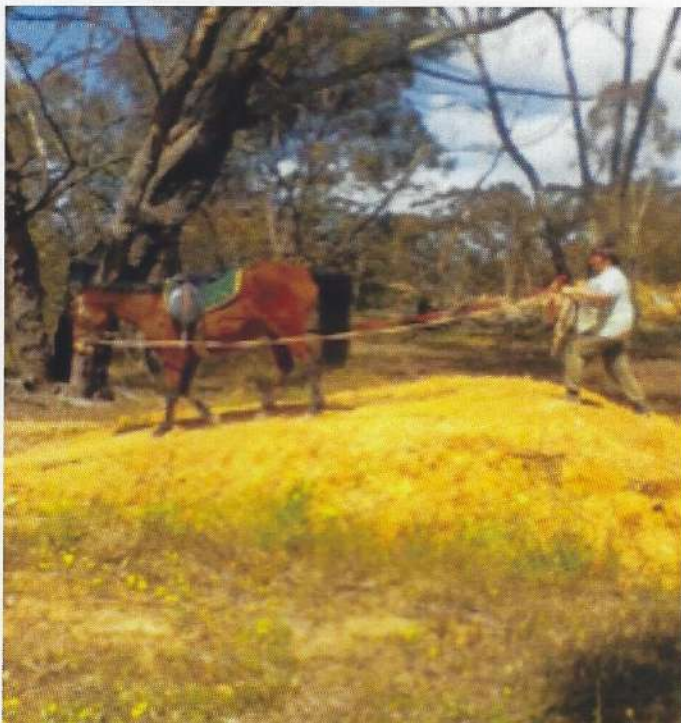


few weeks. Rose's manners were lovely but she was still showing a huge fear of the bit, both in-hand and under saddle. She would run backwards from contact and even lay down to escape it, even though when she lay down it was still done in a calm and quiet fashion.

We aborted our original plans for Rose and went back to the beginning and completely re-mouthed her and showed her that she could relax and trust the bit. After six weeks of re-mouthing and long reining in the bush tracks and lunging in the arena and round-yard Rose now accepted and trusted contact. Now it was time for a rider to board again.

Rose's first few rides were out in the bush so that there was not as much pressure put upon her and she could learn how to relax under-saddle.

Then after time we moved to the grass arena and she seemed to struggle a little in the sand arena. After a week of work on the grass arena we moved her to the sand arena and this time she coped like a pro.



From here Rose has gone ahead in leaps and bounds, starting with a lovely basic collection in all three paces to now she has progressed to shoulder-ins, leg yielding, counter canter and lovely walk canter transitions.

Michele's grand-daughter, Montana has really fallen for Rose. After her first dressage outing early in February 2013 she set a huge goal for the talented Rose to make a debut at Horsham Dressage Festival in late March.

Montana competed in two tests at Preliminary level. Rose proved to thoroughly enjoy her dressage training; she is truly a talented pony who shows cadence and lovely paces. The Dressage Festival was a great success for Rose in securing placing at this level of competition. We hope her presence will open many eyes of the public the life of a project horse and her journey.



current horses

PHHWW Amber
 PHHWW Amelda
 PHHWW Arizona
 PHHWW Aurelia
 PHHWW Autumn
 PHHWW Bart
 PHHWW Bear
 PHHWW Beau
 PHHWW Bella
 PHHWW Ben
 PHHWW Birch
 PHHWW Blaze II
 PHHWW Bobby
 PHHWW Bubbles
 PHHWW Bunny
 PHHWW Buster
 PHHWW Carlo
 PHHWW Cassie
 PHHWW Chance
 PHHWW Charisma
 PHHWW Charlie Brown
 PHHWW Chequers
 PHHWW Cindy
 PHHWW Cookie
 PHHWW
 Creature Comfort

PHHWW Damsel
 PHHWW Daphney
 PHHWW Decoda
 PHHWW Destiny
 PHHWW Dijon
 PHHWW Dillion
 PHHWW Dynamite
 PHHWW Eddy
 PHHWW Ella
 PHHWW Fergie
 PHHWW Frodo
 PHHWW Gemma
 PHHWW George
 PHHWW Georgia
 PHHWW Ginger I
 PHHWW Ginger II
 PHHWW Gizmo
 PHHWW Grahame
 PHHWW Hailey
 PHHWW Honey II
 PHHWW Ivana
 PHHWW Jack
 PHHWW Jack II
 PHHWW Jackson
 PHHWW Jean

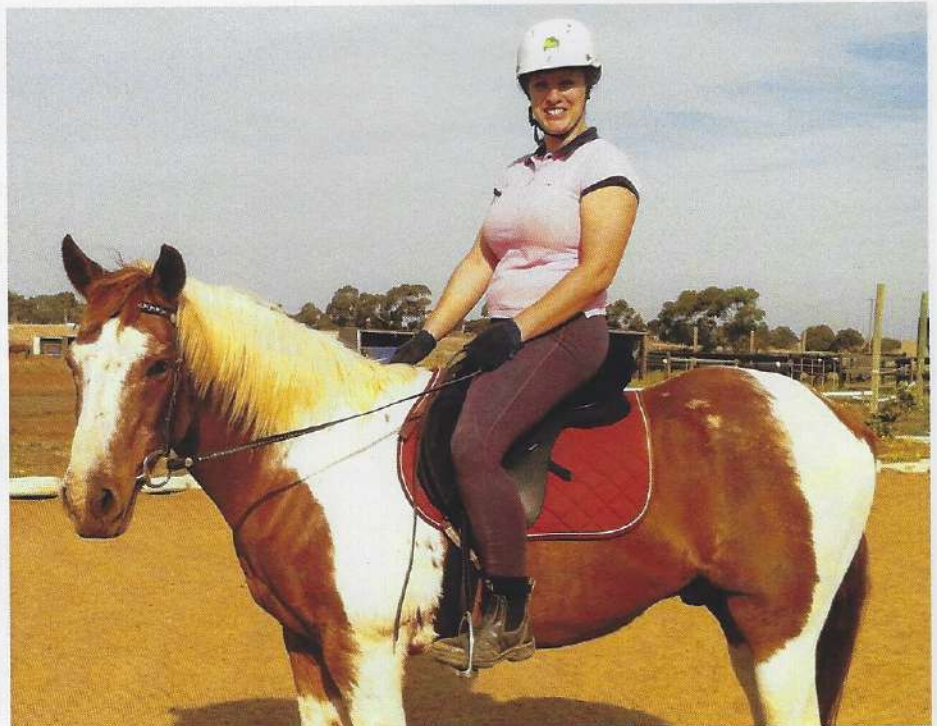
PHHWW Jellybean
 PHHWW Jet
 PHHWW Jill
 PHHWW Jim Boy
 PHHWW Jordan
 PHHWW Kate
 PHHWW Katerina
 PHHWW Lil
 PHHWW Makalali
 PHHWW Matthew
 PHHWW Mayfair
 Indigo Rose
 PHHWW Mikki
 PHHWW Mini
 PHHWW Myph
 PHHWW Nautilus
 PHHWW Neddy
 PHHWW Olive
 PHHWW Omni
 PHHWW Oni
 PHHWW Opal
 PHHWW Ozzie
 PHHWW Paris
 PHHWW Paris II
 PHHWW Patches

PHHWW Patience
 PHHWW Peg
 PHHWW Peggy
 PHHWW Penny
 PHHWW Pepper
 PHHWW Pirate
 PHHWW Pixie
 PHHWW Pocket
 PHHWW Popcorn
 PHHWW Princess
 PHHWW Rafki
 PHHWW Rascal
 PHHWW Rasheem
 PHHWW Red
 PHHWW Red II
 PHHWW Roger
 PHHWW Romeo
 PHHWW Sabo
 PHHWW Sam 4
 PHHWW Scoobie
 PHHWW Shadow
 PHHWW Shakisma
 PHHWW Shebba
 PHHWW Sherry
 PHHWW Smopey

PHHWW Sox
 PHHWW Spaggles
 PHHWW Star Jazmyn
 PHHWW Stella
 PHHWW Stormy
 PHHWW Suede
 PHHWW Sultan
 PHHWW Sunny
 PHHWW Sunny II
 PHHWW Tangles
 PHHWW Ted
 PHHWW Texas
 PHHWW Tia
 PHHWW Tickety Boo
 PHHWW Tilly
 PHHWW Tinkerbell
 PHHWW Tiny
 PHHWW Tomba
 PHHWW Torry
 PHHWW Valentino
 PHHWW Vault
 PHHWW Wheetbix
 PHHWW Yogi Bear
 PHHWW Zack
 PHHWW Zelda



PHHWW Suede has a long term home in the high country, with Nicky Fanning. 2012 was her in her first winter.



PHHWW Shadow - Rehomed in 2011

phhww members day

On Saturday 17 March, 2012, Project Hope held its first ever members day at the Monegeetta Equestrian Centre just north of Melbourne. It was a fine day, perfect for spending time with our members and our rehabilitated horses.

A training update for horse representatives took up the morning, with training coordinator Lucy Clyde and nutrition expert Vici Burgess, using Project Hope horses as live examples to talk through body scoring. RSPCA inspector Shannon Walsh gave great insight into the work that the few inspectors do. This useful and hands on session was much appreciated.

Everyone met and talked over a BBQ lunch, and visited 9 Project Hope horses on site, read their stories and met their carers. It was hard to believe such lovely looking and happy horses had gone through such tough times!

After lunch we heard how home finders help Project Hope to place horses, and Renee, Sharon and Chase talked about individual challenges and rewards with rescued horses. We've had some great feedback from the event.

Many people brought this event to life, so a huge thanks to all. We hope this will be the first of many future members' events.

thank you from phhww

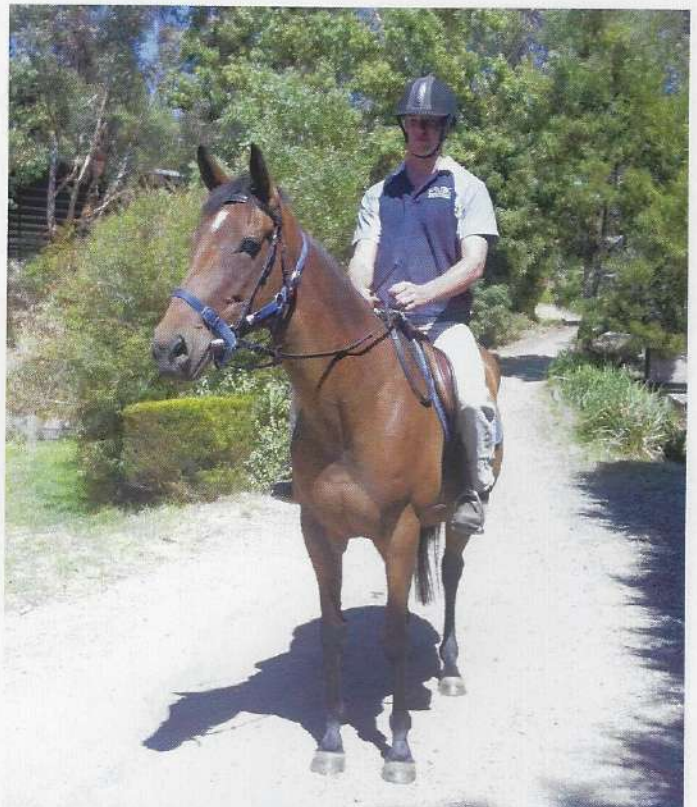
We thank business such as Thats Works for probono design and layout work to present the PHHWW story. I wish to thank all members that have done 'something extra' this year as part of their contribution to the horses.

We also thank several leading educators of horses, especially the Australian Equine Behavioural Centre and Silversands Horsemanship, who have given probono help to create special futures for PH horses.

Other professional equine specialists also regularly give assistance and advice on their own time. To all of these, we say ...THANK YOU.



Steve of Silversands Horsemanship donated 2 days work to change PHHWW Spirit from a frightened wild pony not coming within 6 metres of you, to being able to be led and floated to a new home.



PHHWW Grace during her education at AEBC in 2012

community



Werribee Vet School Expo 2012

Werribee Vet School Expo was another great day to spread the name and work done by Project Hope and how we can assist the horse community. Raffle tickets, donations and merchandise raised \$450, so a good effort. PHHWV Torry and Weetbix came with their carer Sharron. Thankyou to Chase Ellis, Carolyn Bischoff, Aimee Staples, Katie Todd, Heather Wright, and Sharron Todd.

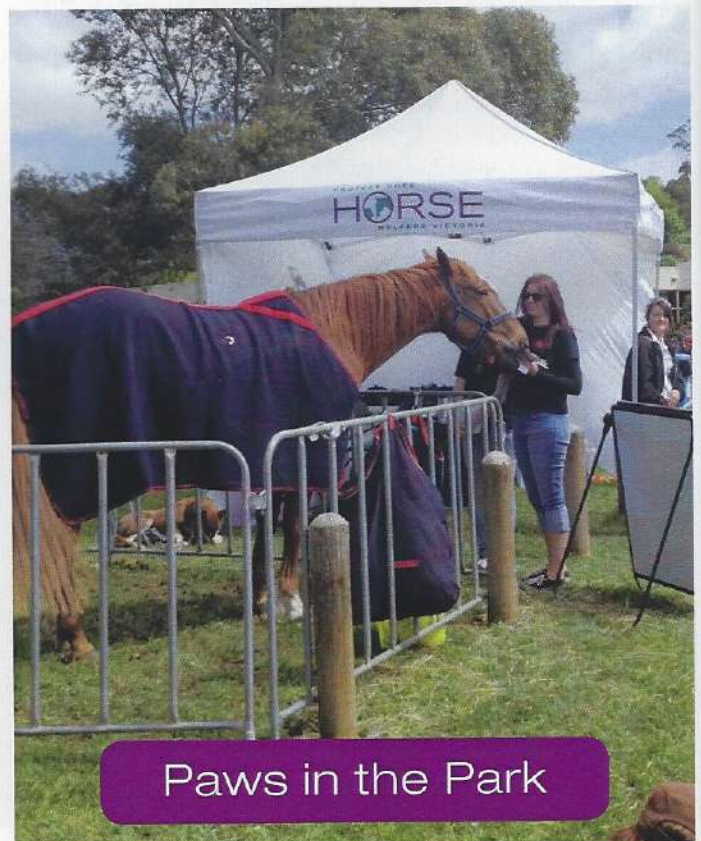
Project Hope also had an information stall and friendly 'meet the people' members on hand at:

- Nilumbik Pet Expo
- Perry's Kyneton Expo/Trade Night
- Paws in the Park Gisborne

Several current members first heard about Project Hope work with horses at these events.



Perry's Expo



Paws in the Park

equitana 2012



PHHWV was the official charity for Equitana 2012. We had a stall in the main hall, 4 displays in the arena working with PHHWV Peggy, and horse stories on the Equitana blog.

The stall was a good time to catch up, put faces to names, and tell other horse people about Project Hope. We gained over 20 new members and PHHWV Peggy was able to demonstrate that neglect can be turned into good. Peggy performed with spirit and obedience in such a busy environment, and happily met bystanders, thanks especially to work by Chase, Tony and Leigh.

Over 30 members helped prepare and organise people, materials, competitions and posters, and then were on hand to meet visitors to the PHHWV stall and at PHHWV Peggy's working display. Thank you.



treasurers report



By Mark Dean

You will find fully detailed income and expenditure figures in the attached auditors report. The report shows our income as \$ 77,741 and our expenses as \$ 60,205.

What isn't shown in these figures is the generosity and expenditure our long term and short term carers provide for the PHHWV horses surrendered into our care. Every long term carer makes the personal commitment to care for their PHHWV horse. They also make a significant financial commitment to what in many cases is an older companion horse who only survives because of the members' generosity.

In relation to providing short term care for newly surrendered horses we, as an association, offer full financial support but in many cases and in probably the majority of cases our members provide short term care at their own expense. This is in addition to the time and personal strength required to support a horse that can be in distressing condition.

PHHWV owes its financial and operational success to the generosity of the members, carers, donors, supporters and sponsors.

Thanks

Mark Dean

A list of all financial donors for the past year follows:

Robyn Watkins	Heidi Fischbacher	Seville Equestrian Club	V Gledhill	H Ward
Sandra Haifenden	Sharon Rabusin	for Adult Riders	B Grimmant	C Bischof
Barbara Sharp	Anne Schuelein	Merricks Saddle Club	J Parker	J King
Helen Morris	Kyneton Obedience Dog	Susan Dowler	S Holt	Elaine Moores
Miriam Pywell	Club	Hinalei Johnson	V Michaelke	S Kosa
Heather Wright	Rob & Di Yendall	Johanna Hart	S Cooke	Margaret Tarrant
Alicia Warrender	Janice Corick	Sandra Strongman	L Moran	Carly Reid
Olive Bailey	Christine Heard	Rhonda Hunter	Lorna Hamilton	Paula Kerven
Jill Alibertini	Mary Hughes	Jane Gruet	P Lloyd	Michael Leonard
Gwyn Lindsay	Helen Ridd	Christine Jacques	M Macartney	Carol Ryan
Kate Fisher	Keith James	Vanessa Mc Coll	M Copping	Carol Lewis
Judy Malmgren	Marion Gason	Leonie Larmer	R Petschel	Alison Livermore
Margaret Whiting	Joan Copland	Michelle Jedlicka	L Budds	Hayley Mitchell
Lyn Mc Bain	Margaret Mc Gill	Katherine Mc Wade	N Fanning	Lorna Hamilton
Felicity St John	Suzanne Knox	Mrs MJ White	A Dades	Carole De Fraga
Brenda Shalders	Kim Howard	Rachel Willis	D Corbett	Jennifer Shearn
Anne Jolley	Jayne Smart	Robyn Reynolds	C Davenport	Julee Hosking
Sue Debets	Kerrie Tresize	Margaret Tarrant	S Marshall	M Cavagna
MP Miniatures Promo	Zoe Welsh	RE & I Barnard	S Toon	Anne Livera
Group	June Pyke	Fay Diamantakis	A Gittens	Joanne Ogg
Ally Guertin	Minchin King	Heather Martin	C Parker	Peta Langbehn
Linda Menzies	Della Davies	Ballarat Trainers	C Barnford	Sandra Sim
Judy Sturrock	Carol Olley	Association	IG & HM Campbell	Karen Higgins
Jo White	Toni Harris	Lisa Massman	T&G Hendy	Jude Fock
Margaret Gawthrop	Carol Roberts	L.F Brehaut	P Kirby	Karyn Flynn
Monica Tanian	Linden Hearn	V.D Gledhill	Westlake Developments	Joan Bucknell
Ann Brookwell	Jenni Austin	Amy Dowler	C Latta	Audrey Dickins
Lindsey Marshall	Madge Marsh	Suzanne	M Bourke	Trevor Tuchy
Linda Harvey	Robyn Greene	Gayle Collins	S Stevens	Brook Ayres
Christine Anne Downing	Marelle Gerdes	Sharon Alexander	A Jack	God Creatures
Fiona Cochrane	Helen White	Shonady Toon	C Morgan	H & B Fashions
Jenny Nagel	Jan Saunders	Ian & Roslyn Flanders	M Nichols	Ritchies Stores
Deena Nott	Shane & Teresa Perry	Maya Rozner	L Lewis	
June Pyke	Kathryn Kerlin	G De Nazai	T Yed	
Ron Eppingstall		C Latta		

PROJECT HOPE HORSE WELFARE VICTORIA INC.
FINANCIAL REPORT
FOR THE YEAR ENDED 28 FEBRUARY 2013

Page Number

Statement by Executive Committee	2
Independent Audit report	3 - 4
Statement of Comprehensive Income	5
Statement of Financial Position	6
Statement of Cash Flows	7
Statement of Changes in Equity	8
Notes to the financial statements	9 - 13

***Project Hope Horse
Welfare Victoria Inc.***

*Financial Report for the year ended
28 February 2013*



Level 4, 30 Collins Street
Melbourne Victoria 3000
TELEPHONE +61 3 9054 0100
FACSIMILE +61 3 9054 0122
www.dfkcollins.com.au

**INDEPENDENT AUDIT REPORT
TO THE MEMBERS OF**

PROJECT HOPE HORSE WELFARE VICTORIA INC.

We have audited the accompanying financial report, being a special purpose financial report, of Project Hope Horse Welfare Victoria Inc., which comprises the statement of financial position as at 28 February 2013, and the statement of comprehensive income, statement of changes in equity and statement of cash flows for the year then ended, a summary of significant accounting policies and other explanatory notes.

The Responsibility of the Committee for the Financial Report

The Committee members are responsible for the preparation and fair presentation of the financial report in accordance with Australian Accounting Standards (including the Australian Accounting Interpretations). This responsibility includes establishing and maintaining internal controls relevant to the preparation and fair presentation of the financial report that is free from material misstatement, whether due to fraud or error; selecting and applying appropriate accounting policies; and making accounting estimates that are reasonable in the circumstances.

Auditor's Responsibility

Our responsibility is to express an opinion on the financial report based on our audit. We conducted our audit in accordance with Australian Auditing Standards. These Auditing Standards require that we comply with relevant ethical requirements relating to audit engagements and plan and perform the audit to obtain reasonable assurance whether the financial report is free from material misstatement.

An audit involves performing procedures to obtain audit evidence about the amounts and disclosures in the financial report. The procedures selected depend on the auditor's judgment, including the assessment of the risks of material misstatement of the financial report, whether due to fraud or error. In making those risk assessments, the auditor considers internal control relevant to the entity's preparation and fair presentation of the financial report in order to design audit procedures that are appropriate in the circumstances, but not for the purpose of expressing an opinion on the effectiveness of the entity's internal control. An audit also includes evaluating the appropriateness of accounting policies used and the reasonableness of accounting estimates made by the Directors, as well as evaluating the overall presentation of the financial report.

We believe that the audit evidence we have obtained is sufficient and appropriate to provide a basis for our audit opinion.



A member firm of DFK International, a worldwide association of independent accounting firms and business advisors
Liability limited by a scheme approved under Professional Standards Legislation

**PROJECT HOPE HORSE WELFARE VICTORIA INC.
STATEMENT BY EXECUTIVE COMMITTEE**

In the opinion of the Executive Committee of Project Hope Horse Welfare Victoria Inc.:

- (a) the accompanying statement of comprehensive income and cash flow statement are drawn up so as to give a true and fair view of the result and cash flows of Project Hope Horse Welfare Victoria Inc for the year ended 28 February 2013;
- (b) the accompanying statement of financial position and statement of changes in equity is drawn up so as to give a true and fair view of the state of affairs of Project Hope Horse Welfare Victoria Inc. as at the end of the financial year; and
- (c) at the date of this statement there are reasonable grounds to believe that Project Hope Horse Welfare Victoria Inc is able to pay its debts as and when they become due and payable.

Signed in accordance with a resolution of the Executive Committee.

Sue Kirkegard
President
Project Hope Horse Welfare Victoria Inc.

Mark Dean
Treasurer
Project Hope Horse Welfare Victoria Inc.

Dated this 15th day of May 2013

INDEPENDENT AUDIT REPORT
TO THE MEMBERS OF
PROJECT HOPE HORSE WELFARE VICTORIA INC. (CONTINUED)

Qualifications

In common with other entities of its size and nature, the Association receives a substantial proportion of revenue from donations in the form of cash. Project Hope Horse Welfare Victoria Inc. has determined that it is impractical to establish controls over the collection of cash revenue prior to its entry into its financial records. Accordingly, as the evidence available to us regarding cash revenue was limited, our audit procedures with respect to cash revenue had to be restricted to the amounts recorded in the financial records. We therefore are unable to express an opinion whether revenue from fundraising and donations by the Association is complete.

Qualified Audit Opinion

In our opinion, except for the effects on the financial report of such adjustments, if any, as might have been required had the limitations on our audit procedures referred to in the qualification paragraphs not existed, the financial report presents fairly, in all material respects, the financial position of Project Hope Horse Welfare Victoria Inc. as of 28 February 2013 and of its financial performance and its cash flows for the year then ended in accordance with the accounting policies described in Note 1 to the financial statements.

Basis of Accounting and Restriction on Distribution and Use

Without modifying our opinion, we draw attention to Note 1 to the financial report, which describes the basis of accounting. The financial report is prepared to assist Project Hope Horse Welfare Victoria Inc. to comply with the accounting policies described in Note 1 to the financial statements and the Associations Incorporations Act 1981 (Vic). As a result, the financial report may not be suitable for another purpose.

DFK Collins

DFK Collins
Chartered Accountants

16 May 2013

Robert Wernli

Robert Wernli
Partner

Melbourne



A member firm of DFK International, a worldwide association of independent accounting firms and business advisers
Liability limited by a scheme approved under Professional Standards Legislation

PROJECT HOPE HORSE WELFARE VICTORIA INC
STATEMENT OF COMPREHENSIVE INCOME
FOR THE YEAR ENDED 28 FEBRUARY 2013

	NOTE	2013 \$	2012 \$
Revenues from ordinary activities			
Fundraising		13,574	6,562
Memberships		15,480	14,775
Donations & Bequests		43,200	54,546
Interest		3,268	3,221
Other Income		2,219	1,916
Total Revenue from Ordinary Activities		77,741	81,020
Expenses from ordinary activities			
Bank Charges		1,367	1,196
Postage		3,664	4,488
Office Expenses		1,633	2,556
Storage Unit		2,820	2,490
Professional Fees (Legal, Accountant)		7,743	9,020
Administration Fees		673	-
Phone/Internet		2,453	2,980
Printing		1,909	2,189
Advertising & Publicity		745	458
Insurance		4,055	1,336
Cost of Sales		5,890	875
Cost of Fundraising		1,533	831
Training		89	-
Venue Hire & Catering		170	1,506
Miscellaneous		179	879
Depreciation		1,030	1,130
Horse Training		2,988	15,051
Vet		7,630	11,363
Dentist		815	952
Farrier		608	2,528
Euthanasia		200	-
Feed		3,764	5,590
Agistment		0	200
Travel & Transport		3,187	3,140
General Horse Expenses		547	1,099
Community Education		23	1,540
Disaster Relief		4,450	169
Total expenses from ordinary activities		60,205	73,566
Comprehensive result – surplus		17,536	7,454
Net result attributable to members of the Association		17,536	7,454

The above statement of comprehensive income is to be read in conjunction with the accompanying notes

PROJECT HOPE HORSE WELFARE VICTORIA INC.

STATEMENT OF CASH FLOWS

FOR THE YEAR ENDED 28 FEBRUARY 2013

	NOTE	2013	2012
		\$	\$
CASH FLOWS FROM OPERATING ACTIVITIES			
Cash receipts in the course of operations		77,742	81,020
Cash payments in the course of operations		(60,308)	(73,803)
Net cash provided by operating activities	8(ii)	17,434	7,217
Net increase in cash held		17,434	7,217
Cash at the beginning of period		98,618	91,401
Cash at the end of the period	9(i)	116,052	98,618

The above statement of cash flows is to be read in conjunction with the accompanying notes

PROJECT HOPE HORSE WELFARE VICTORIA INC

STATEMENT OF FINANCIAL POSITION

AS AT 28 FEBRUARY 2013

	NOTE	2013	2012
		\$	\$
CURRENT ASSETS			
Cash and cash equivalents	3	116,052	98,618
Inventory	4	15,163	17,386
TOTAL CURRENT ASSETS		131,215	116,004
NON CURRENT ASSETS			
Property, plant & equipment	5	625	1,655
TOTAL NON CURRENT ASSETS		625	1,655
TOTAL ASSETS		131,840	117,659
CURRENT LIABILITIES			
Trade and other payables	6	7,700	11,055
TOTAL CURRENT LIABILITIES		7,700	11,055
TOTAL LIABILITIES		7,700	11,055
NET ASSETS		124,140	106,604
EQUITY			
Retained Surplus	7	124,140	106,604
TOTAL EQUITY		124,140	106,604

The above statement of financial position is to be read in conjunction with the accompanying notes

PROJECT HOPE HORSE WELFARE VICTORIA INC.
NOTES TO THE FINANCIAL STATEMENTS
FOR THE YEAR ENDED 28 FEBRUARY 2013

1. STATEMENT OF SIGNIFICANT ACCOUNTING POLICIES

(a) Basis of accounting and preparation

The Association is incorporated under the Associations Incorporation Act 1981. The Association is not a reporting entity because, in the Committee's opinion, it is unlikely that users exist who are unable to command the preparation of reports tailored so as to satisfy, specifically, all of their information needs.

This is a special purpose financial report that has been prepared for distribution to members of the Association for the purpose of fulfilling the committee members' financial reporting requirements under its Constitution. The Committee has determined that the accounting policies adopted are appropriate to meet the needs of the members.

The report has been prepared in accordance with the requirements of the Associations and Incorporation Act 1981, and the following applicable Australian Accounting Standards and Interpretations:

AASB 101	Presentation of Financial Statements	AASB 116	Property, Plant and Equipment
AASB 107	Cash Flow Statements	AASB 117	Leases
		AASB 1031	Materiality
AASB 110	Events after Balance Sheet Date	AASB 1048	Interpretation and Application of Standards

The financial report is prepared in accordance with the historical cost convention.

Unless otherwise stated, all accounting policies applied are consistent with those of the prior year. Where appropriate, comparative figures have been amended to accord with current presentation and disclosure made of material changes to comparatives.

(b) Basis of measurement

The financial report has been prepared on an accruals basis and is based on historic costs and does not take into account changing money values, or except where specifically stated, current valuations of non-current assets

(c) Revenue

Donations & Grants

Donations and Grants are recognised at the time when the Association obtains control over the assets, this usually occurs upon receipt of the funds.

(d) Cash and cash equivalents

Cash and cash equivalents in the balance sheet comprise cash at call in bank accounts and cash on hand. These amounts are carried at the face value of the amounts deposited and approximate net fair value.

PROJECT HOPE HORSE WELFARE VICTORIA INC.
STATEMENT OF CHANGES IN EQUITY
FOR THE YEAR 28 FEBRUARY 2013

	RETAINED EARNINGS	TOTAL
AT 1 MARCH 2012	106,604	106,604
Comprehensive result for the period	17,536	17,536
AT 28 FEBRUARY 2013	124,140	124,140

	RETAINED EARNINGS	TOTAL
AT 1 MARCH 2011	99,150	99,150
Comprehensive result for the period	7,454	7,454
AT 28 FEBRUARY 2012	106,604	106,604

The above statement of changes in equity is to be read in conjunction with the accompanying notes

PROJECT HOPE HORSE WELFARE VICTORIA INC
 NOTES TO THE FINANCIAL STATEMENTS
 FOR THE YEAR ENDED 28 FEBRUARY 2013

	2013	2012
	\$	\$
2. NET INCOME		
Net income has been arrived at after charging (crediting) the following items:		
Depreciation of plant and equipment	1,030	1,130
3. CASH AND CASH EQUIVALENTS		
Cheque Account - Westpac	13,886	18,106
Gift Account - Westpac	28,664	11,265
Grant Account - Westpac	5,664	6,148
Appeals Account - Westpac	1,719	76
Term Deposit	66,119	63,023
	116,052	98,618
4. INVENTORY		
Merchandise	15,163	17,386

PROJECT HOPE HORSE WELFARE VICTORIA INC.
 NOTES TO THE FINANCIAL STATEMENTS
 FOR THE YEAR ENDED 28 FEBRUARY 2013

1. STATEMENT OF SIGNIFICANT ACCOUNTING POLICIES (CONTINUED)

(e) Property, plant and equipment
 Items of property, plant and equipment are initially recorded at cost and depreciated as outlined below.

Depreciation
 Items of property, plant and equipment are depreciated over their estimated useful lives.

The depreciation rates used for each class of asset are as follows:

- Office equipment 20% - 30%
- Furniture & Fittings 10% - 25%

(f) Income tax
 In the opinion of the Committee, the Association is exempt from income tax under Section 50-45 of the Income Tax Assessment Act.

(g) Trade and Other payables
 Liabilities are recognised for amounts to be paid in the future for goods or services received, whether or not billed to the Association. Trade accounts payable are normally settled within 30 days. The carrying value of payables approximates net fair value.

(h) Horses
 The association owns a number of horses that are acquired and recorded at zero cost. The horses do not meet the definition of an asset as it is not probable that any future economic benefits embodied in the horses will eventuate. It is the policy of the Association not to sell any of the horses and in the event of the Association ceasing, the horses will be gifted to another organisation for no consideration.

As at 28 February 2013 the Association had recorded 121 horses on its horse database. These horses are maintained by members under long term lease agreements with the Association.

Expenditure incurred on maintaining and keeping the horses in short term care are expensed as incurred.

PROJECT HOPE HORSE WELFARE VICTORIA INC
NOTES TO THE FINANCIAL STATEMENTS
FOR THE YEAR ENDED 28 FEBRUARY 2013

8. **NOTES TO THE CASH FLOW STATEMENT**

(i) **Reconciliation of cash**
For the purposes of the cash flow statement, cash includes cash on hand and short term deposits with banks or financial institutions.
Cash at the end of the financial year as shown in the cash flow statement is reconciled to the related items in the balance sheet as follows:

	2013	2012
	\$	\$
Cash at bank & short term deposits	116,052	98,618
	116,052	98,618

(ii) **Reconciliation of operating surplus to net cash provided used in operating activities**

Operating surplus after income tax	17,536	7,454
Add/(less) non-cash items:		
Depreciation	1,030	1,130
Net cash provided by operating activities before change in assets and liabilities	18,566	8,584
Changes in assets and liabilities:		
(Decrease)/Increase in payables	(3,355)	3,355
Decrease/(Increase) in inventory	2,223	(4,722)
Net cash provided by operating activities	17,434	7,217

13

PROJECT HOPE HORSE WELFARE VICTORIA INC.
NOTES TO THE FINANCIAL STATEMENTS
FOR THE YEAR ENDED 28 FEBRUARY 2013

5. **PROPERTY, PLANT & EQUIPMENT**

(i) **Book value disclosure**

	2013	2012
	\$	\$
Equipment at cost	6,749	6,749
Less accumulated depreciation	(6,124)	(5,094)
Total property, plant & equipment	625	1,655
Net book value		
Opening WDV at beginning of year	1,655	2,785
Additions	-	-
Depreciation expense	(1,030)	(1,130)
Balance at year end	625	1,655

6. **TRADE AND OTHER PAYABLES**

Creditors & Accruals	7,700	11,055
	7,700	11,055

7. **RETAINED EARNINGS**

Retained surplus at the beginning of the financial year	106,604	99,150
Net surplus	17,536	7,454
Retained surplus at the end of the financial year	124,140	106,604

12

PROJECT HOPE
HORSE
WELFARE VICTORIA

Project Hope Horse Welfare Victoria Inc.

www.phhvw.org.au